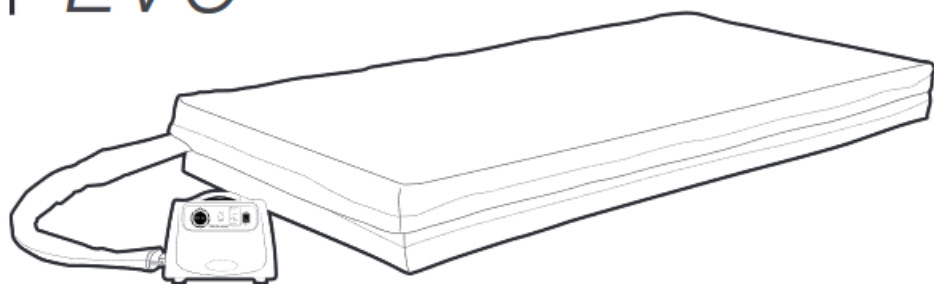
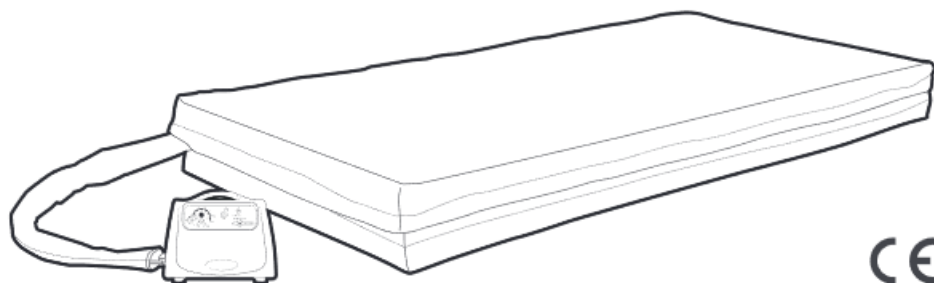


CAIRFLOW PM100A EVO



Technical Manual

CAIRFLOW PM100A EVO DIGITAL



CE


TABLE DES MATIÈRES

| | |
|---|--------|
| ALARMS AND TROUBLESHOOTING | - 3 - |
| MAINTENANCE AND DISINFECTION | - 4 - |
| Daily maintenance | - 4 - |
| Maintenance between patients..... | - 4 - |
| Cleaning the compressor..... | - 4 - |
| Mattress cleaning | - 4 - |
| Cleaning of the cover | - 5 - |
| Disinfection of the cover..... | - 5 - |
| Recommended maintenance and disinfection flowchart..... | - 6 - |
| Preventive maintenance | - 7 - |
| Periodicity of revisions..... | - 7 - |
| Mattress..... | - 7 - |
| Compressor..... | - 7 - |
| WEEE (Waste Electrical and Electronic Equipment)..... | - 8 - |
| Equipment concerned | - 8 - |
| Before 13 august 2005: for electrical and electronic equipment placed on the market | - 8 - |
| After 13 august 2005: Electrical and electronic equipment placed on the market | - 8 - |
| SPARE PARTS | - 9 - |
| CAIRFLOW PM100A EVO DIGITAL compressor – Reference 826780..... | - 9 - |
| CAIRFLOW PM100A EVO compressor – Reference 826776 | - 11 - |
| CAIRFLOW PM100A EVO and PM100A EVO DIGITAL mattress | - 13 - |
| Valve CPR | - 15 - |

ALARMS AND TROUBLESHOOTING

No daily maintenance is required. This medical device should be serviced by a qualified and authorised technician. For advice on the type of fault, you can refer to the table below.


| Problem encountered | Inspection | Solution |
|---|--|---|
| The pump does not switch on. | <ul style="list-style-type: none"> - Check if the plus is connected to the mains, - Check the mains supply by plugging in another device, - Check if a fuse is blown. | <ol style="list-style-type: none"> 1. Change the power source. 2. Replace the fuse. 3. Contact your service representative if the problem persists. |
| <p>The "Mains" alarm light will illuminate continuously, and the audible alarm will sound.</p> <p>The "low pressure" alarm indicator lights up continuously and the audible alarm sounds.</p> | <ul style="list-style-type: none"> - Check if there has been a power cut. - Check if the CPR is closed. - Check that the connection between the air hose connector and the pump is in place. - Check that all hole connections along the mattress are in place. - Check each cell for holes or connection problems. | <ol style="list-style-type: none"> 1. Ensure all connections to the mattress and pump are secure. 2. Check that the CPR is correctly connected. 3. Replace a damaged cell if necessary. 4. Contact your service engineer if the problem persists. |
| The mattress does not inflate when the pump is connected. | <ul style="list-style-type: none"> - Check if there has been a power cut. - Check if the CPR is closed. - Check that the connection between the air hose connector and the pump is in place. - Check that all hose connections along the mattress are in place. - Check each cell for holes or connection problems. | Contact your technician if the problem persists. |
| The inflation of the air mattress is not suitable for the patient. | <ul style="list-style-type: none"> - Check that the mattress is securely fastened to the bed frame with straps. - The set pressure may not be suitable for the patient, adjust the setting with +/- 10 kg. | Contact your technician if the problem persists. |
| The pump makes noise. | Ensure that the pump is positioned on a flat surface. | <ol style="list-style-type: none"> 1. Position the pump differently. 2. Contact your technician if the problem persists. |

 This system is not a maintenance-free product. Maintenance and repairs must be carried out by a trained person. All systems must be cleaned and disinfected before being returned. Soiled or dirty products will be returned without repair. It is imperative that the air filter be checked for cleanliness.

MAINTENANCE AND DISINFECTION



- It is essential to disconnect the mains plug from the electrical cable connected to the compressor. The "mains" indicator must be off.
- Do not use a high-pressure jet to clean a CAIRFLOW compressor.
- Do not spray any liquid on the compressor to avoid any deterioration of the compressor by penetration of liquid inside the casing.

 Do not use corrosive cleaning products such as industrial degreasers, solvents such as acetone or ether, or colouring products (iodised alcohol, potassium permanganate, silver nitrate, etc.). Do not use abrasive materials such as steel wool or "scotch brite".

DAILY MAINTENANCE

- **Who?** User department staff.
- **What?** Cleaning the cover daily and after each soiling.
- **With what?** Surfanios or similar, diluted to 1 sachet per 5 litres of water.
- **What to do?** Put on gloves and goggles, take some single-use paper (such as cellulose wadding), and soak it in Surfanios. Rub the whole cover in contact with the patient and check the integrity of the cover (a hole or a breach must generate an immediate change of this cover or a change of mattress). Repeat the operation if necessary.

MAINTENANCE BETWEEN PATIENTS

- **Who?** User department staff.
- **What?** Complete cleaning and disinfection of the mattress cover before re-use or storage.
- **With what?** Surfanios diluted to 1 sachet per 5 litres of water, Phagosept Spray ready to use.
- **What to do?** Wear gloves and goggles for the entire cleaning and disinfection procedure.

CLEANING THE COMPRESSOR

Use a wipe lightly impregnated with a solution of detergent or surface detergent/disinfectant that complies with the requirements of Regulation (EU) 528/2012 (on biocidal products of 22 May 2012) at the concentrations recommended by the manufacturer. Observe the residual time. The air filter should also be cleaned and checked at least every 6 months. The air filter can be removed by removing the cover (pull the air filter out towards you and replace it with a new one). Use a very slightly damp cloth to remove dust.

MATTRESS CLEANING

The air, cell, and harness assembly of the CAIRFLOW range of mattresses can be easily removed from the base.

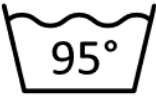




The mattress should be cleaned weekly using a soft damp cloth and a mild detergent.

The mattress cells can be wiped with a 1000 ppm sodium hypochlorite solution or any other non-phenolic germicidal solution.

CLEANING OF THE COVER

Check the integrity of the mattress cover (if it is damaged, it should be replaced with a new one). Take some disposable paper (cellulose wadding) and impregnate it with Surfanios. Scrub the entire surface of the mattress cover.

Covers and bases can be machine washed under the following conditions:

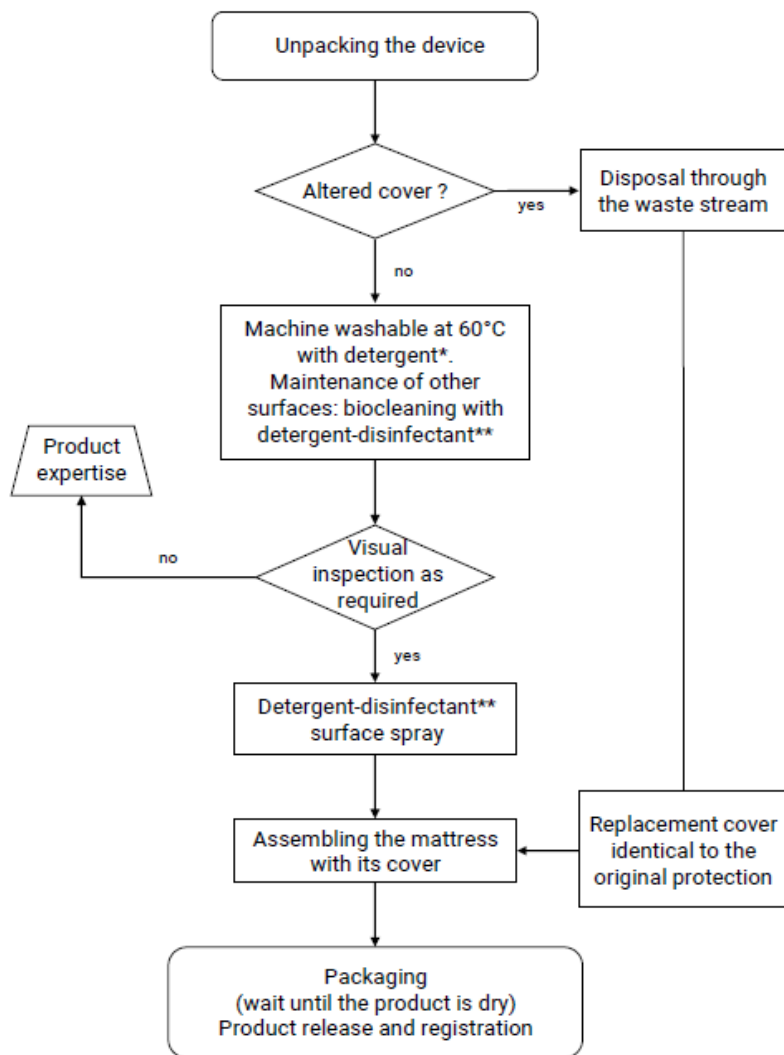
| | |
|---|---|
|  | Machine washable, max. T° 95°C. |
|  | Textile not resistant to bleaching and stain removal with pure chlorine-based products. |
|  | Tumble dry allowed, moderate temperatures (60°C) (applicable to top cover only). |
|  | No ironing. |
|  | Dry cleaning with perchloroethylene, moderate cleaning process. |

DISINFECTION OF THE COVER

Take a spray bottle of Phagosept Spray or similar and apply to the entire surface of the cover. Allow to dry and protect the result of the disinfection process with a sheet.

RECOMMENDED MAINTENANCE AND DISINFECTION FLOWCHART

Recommended maintenance and disinfection flowchart



*Neutral detergent (household detergent)

**Broad spectrum cleaner/disinfectant, standardised as bactericide EN 1040, EN 13727+A2; Fungicide EN 1275, EN 13624; Sporicide EN 14347; Virucide EN 14476+A1

PREVENTIVE MAINTENANCE

PERIODICITY OF REVISIONS

It is recommended to check the CAIRFLOW compressors at least once a year, in terms of flow rate and pressure. It is also recommended to check the pump body every year and the distributor every two years.

The period during which the spare parts necessary for the maintenance of the CAIRFLOW products will be available is 5 years from the date of the invoice of the product.

MATTRESS


Top cover: visually check for damage and stains on the mesh side (white). In case of damage or stains, the cover must be replaced.

The CAIRFLOW mattresses do not contain any wearing parts.

COMPRESSOR

The compressor filter should be changed once a year or more frequently depending on the environmental conditions (dust, smoke, etc.).

This filter is located on the back of the compressor behind a cover (the original filters are white). The compressors of the CAIRFLOW range contain wearing parts and sensors that need to be checked, replaced or recalibrated.

 Overhauls may only be carried out by authorised personnel, contact your dealer or the manufacturer.

WEEE (WASTE ELECTRICAL AND ELECTRONIC EQUIPMENT)

In accordance with the regulations in force concerning the elimination of Waste Electrical and Electronic Equipment (WEEE), WINNCARE France undertakes to contribute to the treatment, recovery and recycling of Electrical and Electronic Equipment at the end of its life.

The holder must not under any circumstances dispose of end-of-life Electrical and Electronic Equipment in the environment or in household waste bins with other unsorted waste, so that the latter can be the subject of selective collection with a view to their recovery, reuse or recycling and thus contribute to the protection of the environment, the preservation of natural resources and the protection of health.

EQUIPMENT CONCERNED

Appliances and instruments bearing the pictogram (Waste Electrical and Electronic Equipment) meaning that at the end of their life they must not be mixed with other types of waste, must be treated separately.

BEFORE 13 AUGUST 2005: FOR ELECTRICAL AND ELECTRONIC EQUIPMENT PLACED ON THE MARKET

The holder must finance and organise the disposal of end-of-life electrical and electronic equipment. Except in the case of a replacement by an equivalent equipment or ensuring the same function. In this case, WINNCARE France applies the same procedure for the elimination of Waste Electrical and Electronic Equipment (WEEE) placed on the market after August 13, 2005.

AFTER 13 AUGUST 2005: ELECTRICAL AND ELECTRONIC EQUIPMENT PLACED ON THE MARKET

WINNCARE France complies with the European directives in force. WINNCARE France undertakes to finance the organisation of the elimination of the said waste. Details concerning the organisation of WEEE are available by contacting:

WINNCARE France

4, Le Pas du Château

85670 SAINT-PAUL-MONT-PENIT

FRANCE

Tél. : +33 (0)4.66.02.15.15

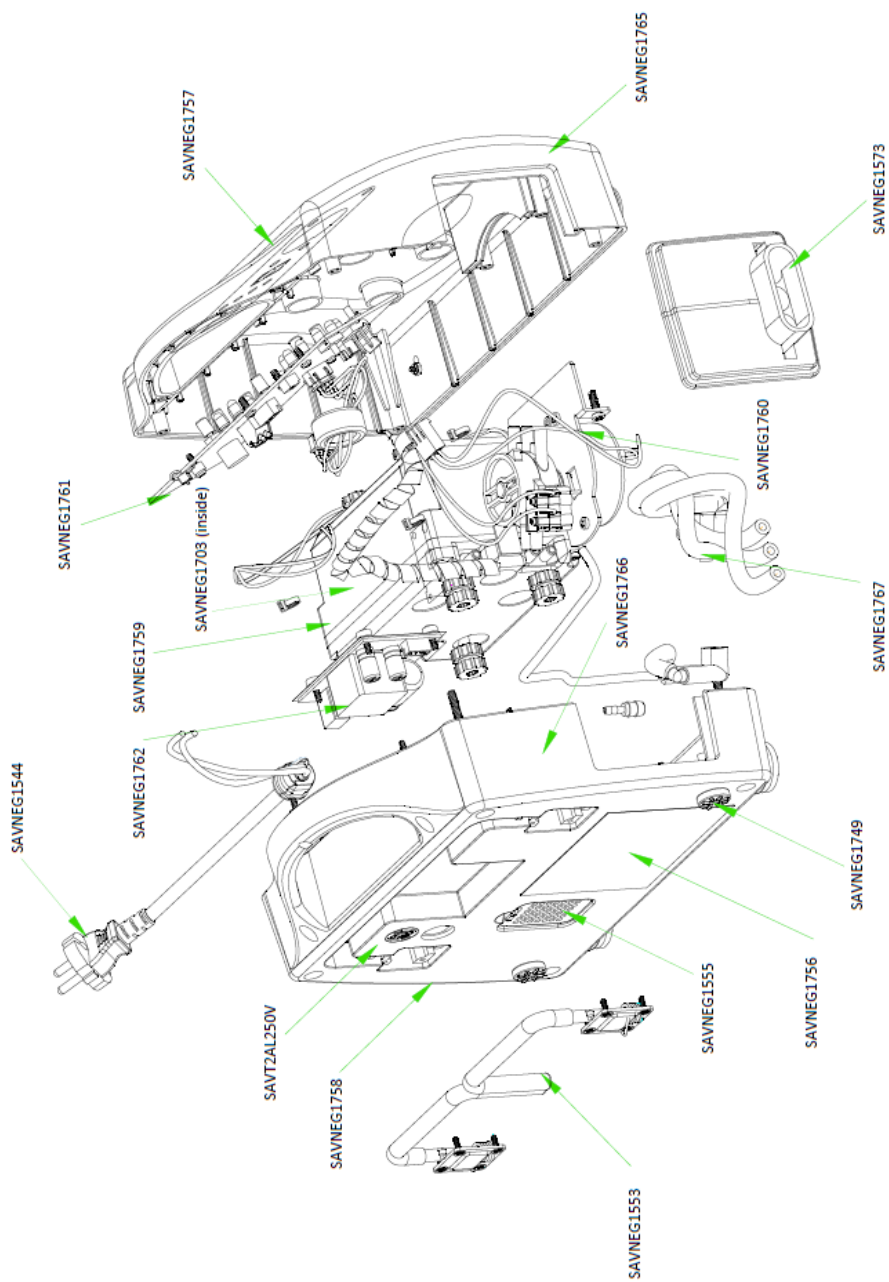
Fax. : 33 (0) 4.66.02.15.00

Email: contact@winncare.fr or website www.winncare.com

If the holder does not apply this procedure, he must recycle the Electrical and Electronic Equipment at the end of its life according to an adapted method, at his own expense. The holder must provide WINNCARE France with the necessary information. If the products are resold later, the holder must ensure that the new purchaser is fully aware of his obligations to recycle the end-of-life Electrical and Electronic Equipment.

SPARE PARTS

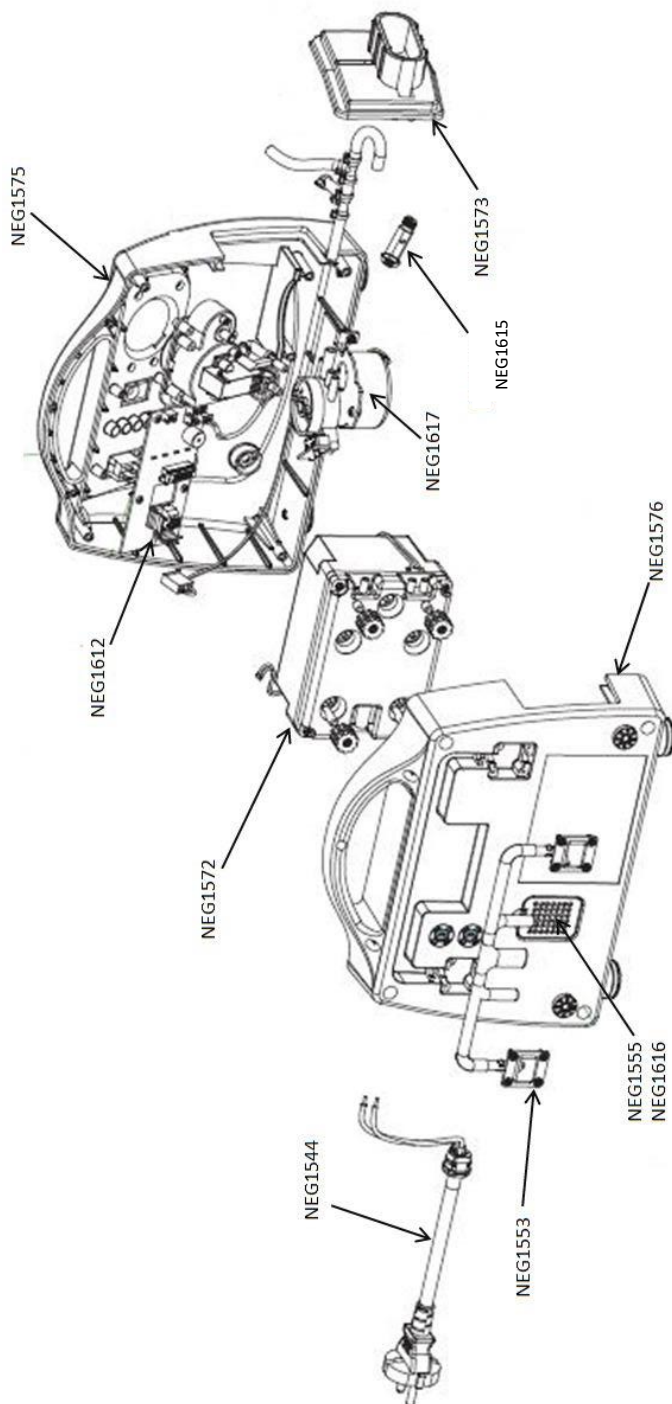
CAIRFLOW PM100A EVO DIGITAL COMPRESSOR – REFERENCE 826780



List of references:

| References | Designation |
|-------------------|---|
| SAVNEG1765 | FRONT BOX |
| SAVNEG1766 | REAR CASE |
| SAVNEG1553 | PM100A EVO/DIGITAL MOUNTING HOOK |
| SAVNEG1759 | AIR MOTOR - PM100A EVO DIGITAL |
| SAVNEG1760 | DISTRIBUTOR MOTOR - PM100A EVO DIGITAL |
| SAVNEG1761 | ELECTRONIC BOARD - PM100A EVO DIGITAL |
| SAVNEG1762 | POWER SUPPLY BOARD - PM100A EVO DIGITAL |
| SAVNEG1544 | COMMON POWER CORD |
| SAVNEG1767 | PRESSURE MANIFOLD |
| SAVNEG1555 | AIR FILTER PM100A EVO |
| SAVNEG1573 | AIR OUTLET PM100A EVO |
| SAVNEG1703 | PUMP BODY PM100A EVO/DIGITAL |
| SAVNEG1749 | ANTI VIBRATION PAD PM100A EVO/DIGITAL |
| SAVNEG1756 | CE STICKER - PM100A EVO DIGITAL |
| SAVNEG1757 | FRONT PANEL STICKER - PM100A EVO DIGITAL |
| SAVNEG1758 | STICKER INSTRUCTIONS FOR USE - PM100A EVO DIGITAL |
| SAVT2AL250V | TIME FUSE 2A |

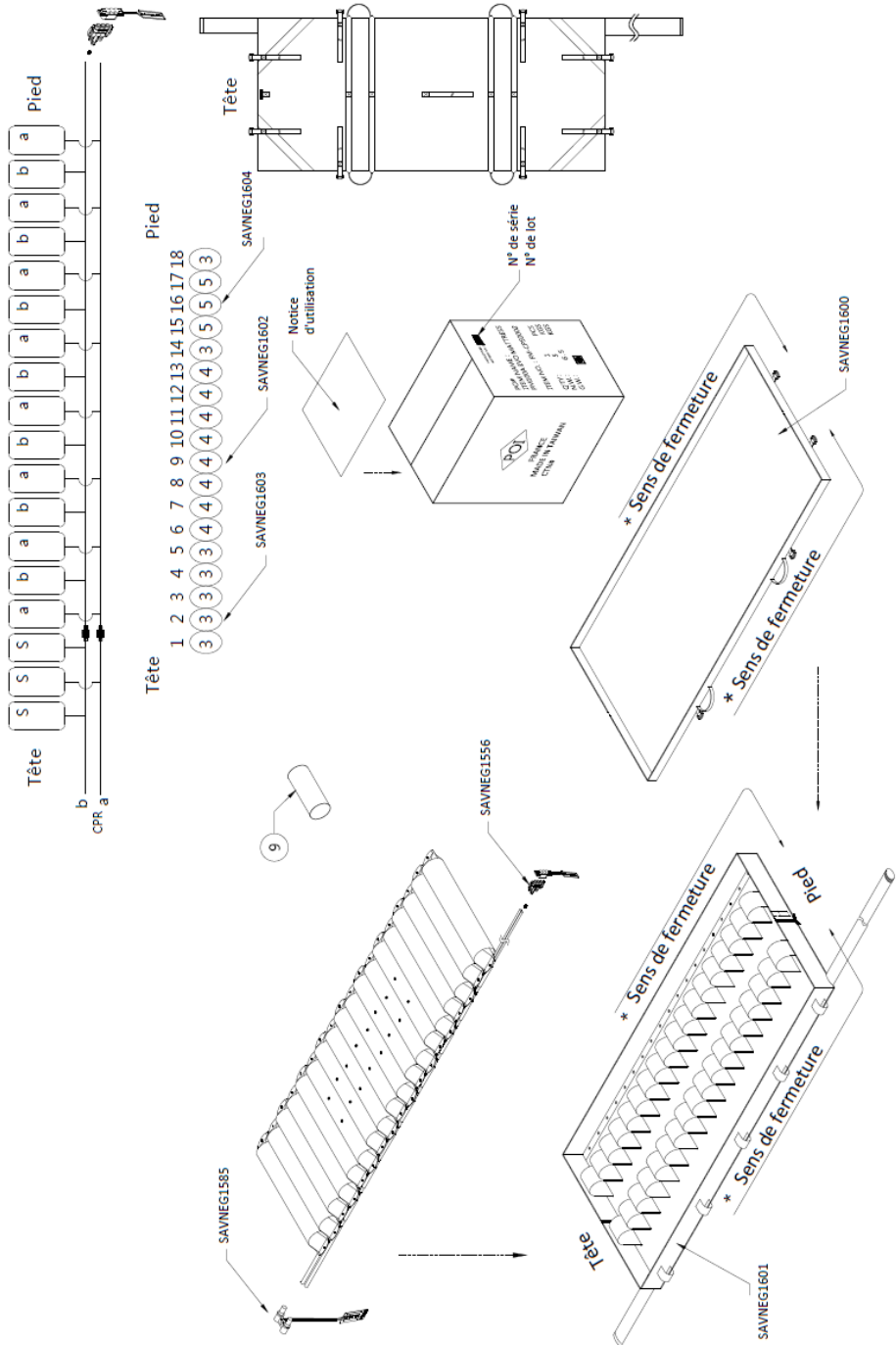
CAIRFLOW PM100A EVO COMPRESSOR – REFERENCE 826776



List of references:

| References | Designation |
|-------------------|----------------------------------|
| SAVNEG1544 | COMMON POWER CORD |
| SAVNEG1553 | PM100A EVO/DIGITAL MOUNTING HOOK |
| SAVNEG1555 | AIR FILTER PM100A EVO |
| SAVNEG1616 | AIR FILTER HOLDER PM100A EVO |
| SAVNEG1576 | REAR BOX PM100A EVO |
| SAVNEG1572 | AIR MOTOR 6LMN PM100A EVO |
| SAVNEG1612 | M/A SWITCH (PM100A/PM100AEVO) |
| SAVNEG1617 | DISTRIBUTOR MOTOR PM100A EVO |
| SAVNEG1615 | FUSE HOLDER |
| SAVNEG1573 | AIR OUTLET PM100A EVO |
| SAVNEG1575 | FRONT BOX PM100A EVO |

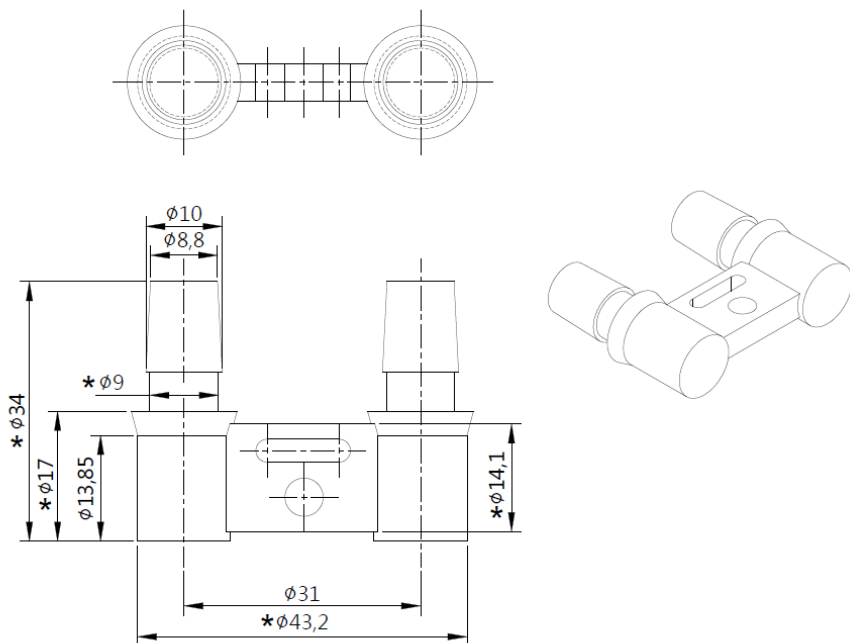
CAIRFLOW PM100A EVO AND PM100A EVO DIGITAL MATTRESS



List of references:

| References | Designation |
|-------------------|--|
| SAVNEG1585 | CPR PM100A EVO/ PM100A EVO DIGITAL VALVE |
| SAVNEG1556 | MATTRESS TIP 3 CONNECTORS |
| SAVNEG1601 | TOP BOX SMAT DYNADJUST/ PM100AEVO/ DIGITAL |
| SAVNEG1600 | LOWER BOX SMAT DYNADJUST/ PM100AEVO/ DIGITAL |
| SAVNEG1603 | CELL WITHOUT PA DYNADJUST/ PM100AEVO/ DIGITAL |
| SAVNEG1602 | CELL WITH DYNADJUST PA/ PM100AEVO/ DIGITAL |
| SAVNEG1604 | CELL WITH FAST CONNECTION DYNADJUST/ PM100AEVO/ DIGITAL |

VALVE CPR



CPR valve reference:

| References | Designation |
|------------|--|
| SAVNEG1585 | CPR PM100A EVO/ PM100A EVO DIGITAL VALVE |



WINCARE France
4, Le Pas du Château
85670 SAINT-PAUL-MONT-PENIT
FRANCE

Tél. : +33 (0)4.66.02.15.15
Fax. : 33 (0) 4.66.02.15.00
Email: contact@winnicare.fr
www.winnicare.com

